



Briercliffe with Extwistle Parish Council

www.briercliffeparishcouncil.co.uk

December 2023

Published by Briercliffe with Extwistle Parish Council - briercliffeparishcouncil@yahoo.co.uk

Merry Christmas Your Parish Councillors

from



(Photo by Neil Matthews)

Gordon Lishman
(VICE CHAIR)

Pippa Lishman

Libby Lalor

John Marlow

Michael Greenwood

Vicky Balmer

Richard Sagar

Michael McFarlane

Roger Frost
(CHAIR)

The recent by-election has brought together a new Parish Council. New Elected members; Libby, John, Vicky, Richard and Michael join existing Councillors, Gordon, Pippa, Michael and Roger.

Christmas is a very special time for many of us. A time to reflect on the past year and plan for the year ahead. It's a time to recharge the batteries and ready ourselves for the challenges and opportunities ahead.

Your Parish Council would like to wish everyone in our Parish a happy and healthy Christmas and a prosperous 2024.

Stay safe, stay healthy, and have a wonderful holiday.

INSIDE THIS ISSUE

CHRISTMAS MESSAGE

ALLOTMENTS

QUEEN ST MILL

LOCAL HISTORY- MANNERS & CUSTOMS

REINDEER TRAIL THANKS

LOVE CLEAN STREETS

TRAVEL ON THE BUS

MEET UP & CLEAN UP

Allotments

Lead Councillors Pippa & Michael have been very busy working through waiting lists and getting new tenants signed up. We have now got a total of 28 people on the waiting lists. We have potentially 14 vacant plots, appointments are being made with the applicants in order to sign up.

We have signed up 23 new allotment and 4 garage tenants in the last few months.

There was a successful skip day on the allotments in early November, the next tenant skip day will be at the start of the growing season 2024.

Photos by Liam Holden



The Bonfire event for tenants was held on November 5th. It was a great event, well attended. We have received lots of feedback and are planning further opportunities for tenants to get together as a community throughout the coming year.



The Manners and Customs of our Forefathers

By Roger Frost

This article is taken from another which appeared in a fundraising booklet, published in 1922 in Nelson (1). The aim of the fund was to raise £500 for the Nelson & Barrowford Memorial Hospital established in 1920. The hospital was located at the large house, "Reedyford", formerly home of the Tunstill family, the large cotton manufacturers of Burnley and Brierfield.

Information came from Briercliffe itself. The owner, of the document published below, was Mr Thomas Robertshaw, of Burwains (2) in the Township of Briercliffe, though "Burrans" is given in its intro. Comments follow that "will give us some idea of the manners and customs of our forefathers in this part of the country", though I suspect that its author quite enjoyed writing about primitive activities of Briercliffe, which was then one of North-east Lancashire's wilder townships.



THESE are, therefore, in His Majesty's Name, strictly to charge, and command you, the Constable, Churchwarden and Overseers of the Poor (10) of Briercliffe-with-Extwistle, to give Notice to all Householders, and Inhabitants, within your said Town, not to suffer any of your Children or Servants to wander out or play at any of the aforementioned Games, or to be guilty of any of the aforementioned offences on the Lords Day, and that you make diligent and strict search, within your said Town, in all suspected houses, every Sabbath Day, for the finding and apprehension of all such persons, and him, or her, or them to bring before Us, or some of HM's Justices of the Peace, to answer the Premises (11) and further to be dealt according to Law.

Herein, fail not at your Peril. Given under our Hands and Seal, this 12th day of September, in the Year of Our Lord, One thousand, seven hundred and 51.

To the Constables, Churchwardens and Overseers of the Poor of Briercliffe-with-Extwistle,

R. Whitehead.

H T Blackmore (12).

I have added to both this Introduction and to the document itself a number of footnotes i that you might find useful. The text has been changed a little - to bring it up to date. A few unnecessary words have been removed & a few spellings have been updated.

County of Lancaster to wit

Whereas complaint hath been made unto us, two of His Majesties Justices of the Peace, in and for the said County, by several inhabitants within the Hundred of Blackburn (3) and County, aforesaid, that very many idle persons in several Townships (4) within the said Hundred, make a common practice of leaping, playing at football, quoits (5), bowls, and many other unlawful games, hunting, tipling in the Ale-houses (6), swearing, cursing and profaning the Sabbath, and absenting themselves in time of Divine Service from the Church on the Lords Day (7) by which they incur, upon themselves, by every such offence, the Penalty of Three Shillings and Fourpence (8) for the use of the Poor of the Township, where such offences are committed, or sit in the Stocks (9) for the space of three hours.

(1). The book is, "Nelson and District Illustrated History from Roman Times 'till 1922", a copy of which can be found in Nelson Library.

(2). Burwains, a large farm house off Halifax Road, is the former home of the Briercliffe family. The Briercliffe's, facing continued bankruptcy, had to sell the house, and its small estate, to the Robertshaw family, of Colne, in the middle of the eighteenth century. The present house was built in 1642 but several other earlier properties are known to have existed on the site, to perhaps Pre-Norman times.

(3). The Hundred of Blackburn contained most of North-east Lancashire. It was an administrative area managed from the town of Blackburn and was set up in Pre-Norman times. Burnley became the second town of what was also known as "Blackburnshire".

(4). A "township" was the lowest form of local government being the equivalent of a "civil parish" today.

(5). Quoits - a quoit is a ring of rope, wood etc used in a throwing game, a game in which such a ring is tossed towards a peg or small stake in an attempt to ring it. The game may have originated in France.

(6). "Tipling in the Ale-houses", means drinking at one of Briercliffe and Extwistle's many public houses. At this time (1751) there were about nine such houses, all of which brewed their own beer.

(7). Briercliffe-with-Extwistle had no church in 1751, though one had been requested in 1650 but not granted. Similarly, there were no Dissenting Chapels, at this time, and Catholic places of worship were proscribed (not allowed by law). Both Briercliffe and Extwistle were in the Chapelry of Burnley which was based on St Peter's, in Burnley.

(8). Three shillings and fourpence, is one-third of a pound. Another way is to call the same amount of money, 10 groats. We were not decimalised in those days!

(9). There are a number of references to the Stocks in Briercliffe, but it is not clear where they were. The "stocks" were a form of punishment. Individuals could be sentenced to "the stocks" into which they were fixed by their arms and legs. Others might throw stones and dirt at them. But not tomatoes, which were far to expensive to waste in this way!

(10). The Constable, the Churchwarden and the Overseer of the Poor were three of the four officials of the Township. The fourth was the Surveyor, whose job it was to maintain the highways.

(11). Premises - a premiss is a fact, a statement or an assumption on which an argument is based. In this case, a charge would be a better word.

(12). H T Blackmore was a Burnley landowner and businessman. He was the founder of the Burnley coal industry in the first half of the eighteenth century. Not sure who R Whitehead was.



we thank everyone who joined us on the Reindeer Trail on Sunday, 3rd December, and for making decorations for our Little Christmas Memory tree. Let's see how much our memory tree grows over the coming year.



Queen St Mill

Cty Cllr Cosima Towneley
07817725976 cosima.towneley@lancashire.gov.uk

I chaired the County Council's Working Group for Museums. Our job was to reopen and use these community assets. Queen Street Mill was the most problematic, but also offered the most exciting opportunities. A brick had fallen from the top of the 120m chimney and investigations showed serious erosion inside and out. That led to lumberjacks and plastic covers followed by storms, pandemic delays, and the failure of a chimney band at King's Mill.



The most important remaining aspect is the running of the unique engine, Peace, that makes Queen Street the last working steam-driven weaving shed in the world. We are looking at running Peace in a cleaner, greener way.

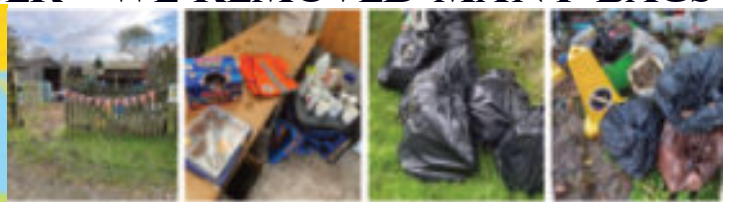
I thank the National Trust for their advice and counsel. There are still serious challenges, but there is a lightness of spirit at the Mill that is tangible and I believe in what the team are achieving. Please take yourselves and your guests to the Mill. There is so much to see, hear, smell and a good piece of cake too!



Love Clean Streets

is the app for reporting problems about roads, green spaces, streets and rubbish to Burnley and the County Councils. Download it free from your mobile's app store, Google Play Store, and Apple iTunes Store.

THANK YOU TO EVERYONE WHO CAME OUT TO LITTERPICK ON THE LAST WEDNESDAY IN OCTOBER - WE REMOVED MANY BAGS



Avoid the hassle of driving & take advantage of great value bus fares, all day every day. It's just £2 maximum fare for a single trip and only £1 after 7pm, ideal for nights out.

Plus, if you buy a bus ticket for Saturday you get Sunday free with the new weekender bus ticket.



Find out more www.lancashire.gov.uk/publictransport

Printed by www.helloprint.co.uk